

Welcome and Keynote Presentation

Milica Kitson

Chief Executive

Constructing Excellence in Wales



Who are we and what do we do?



CEW programme of work

- Exemplar & Demonstration Projects
- Construction Waste Minimisation
- 21st Century Schools
- Low/Zero Carbon buildings and infrastructure
- Task and Finish groups – Infrastructure, Procurement
- Consultative Forum
- Public Sector Client Forum
- Awards
- Events Programme

<http://www.cewales.org.uk/>
@CEWales





Maes yr Omn Farm, Manuel, Caerphilly

"Wales' first fully 'off-grid' and truly self-sufficient farm house"

PROJECT DETAILS

Design, construction and installation of Wales' first fully 'off-grid' and truly self-sufficient Great House Farm. Project budget £250,000 for building, services, fixtures and fittings, materials and transportation (March to 2012).

Self-powered location

- Full engagement with owner
- Long-term energy planning and technical monitoring
- Low-Carbon Construction
- Order self-sufficiency

Completed project started April 2012 - completed June 2012, resulting in a 3 year period, 2012-2016



PROJECT TEAM

Client: The Davies Family
Main contractor: T&F Build
Lead Designer: Rebecca Cuthbertson (RCE)
Other project participants: County Council Council (RCE Energy team), South East Southern Energy (SE), Construction Skills Partnership (SE), Welsh School of Architecture (SE)

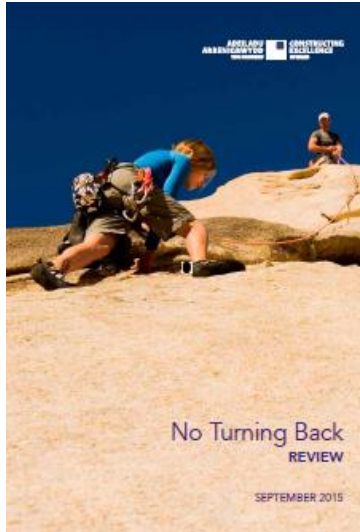
KEY CONTACTS

Bill Evans, CE Wales
bill@cewales.org.uk

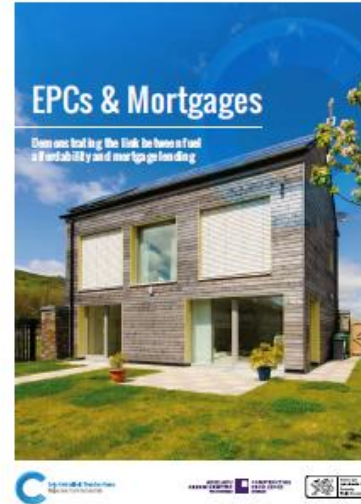
www.cewales.org.uk



Read more about [Wales' first off-grid self-sufficient family home](#)



Read out [No Turning back review](#)



Read more about our [EPC & Mortgages work](#)

Read more about the [Great House Farm sustainable housing development](#)



By “*Building Better Buildings*”
what are we really providing?



Realising a low carbon future

- 21st Century lifestyles
- Technology vs. behaviour change
- Fabric first
- Renewables and community energy

CASE STUDY

ADEILADU
ARBENIGRWYDD
YNG NGHMRU



CONSTRUCTING
EXCELLENCE
IN WALES



Maes yr Onn Farm *Manmoel, Caerphilly*

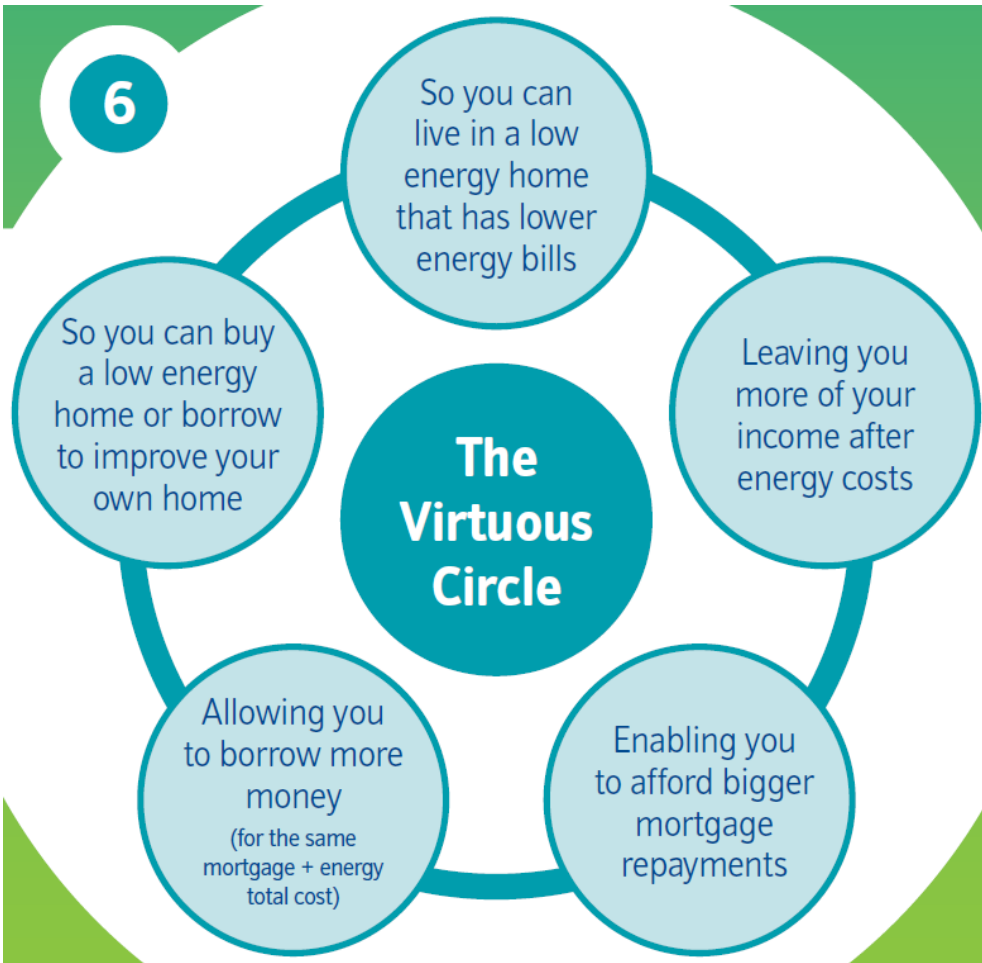
*“Wales’ first fully ‘off-grid’
and truly self sufficient
farm house”*

PROJECT DETAILS

Design, construction and monitoring of Wales’ first fully ‘off-grid’ and self sufficient three bed farm house.

Project budget: £100,000 for building construction.

Investing differently



- Ready to take whole life costing seriously?
- Can mortgage lenders help shift the market to retrofit?
- Will today's investment be right for tomorrow's climate?

Leaving the right legacy

- Long term impacts of today's policy decisions
- Closing the performance gap in new builds
- Retrofitting right

Exposure Zones

-  very severe
-  severe
-  moderate
-  sheltered



IMPROVEMENTS



BARRIERS



RISKS



INFO



By “*Building Better Buildings*”
what are we really providing?

<http://www.cewales.org.uk/>
@CEWales

